

Multi Jet Dry Type Vane Wheel Water Meter With Remote Transmission Device

Features:

- Dry-dial, magnetic drive, protected against external magnetic tampering
- Vacuum sealed register, frost resistant, keeps clear reading for long time
- Brass body can be painted
- External adjusting device
- For hot or cold water
- Remote transmission device can be added upon request
- Many kinds of sensors, such as Reed Switch, Hall and Weagand can be supplied upon request
- Pulse output may be 1l/pulse, 10l/pulse
- The meters conform to ISO4064 Standard Class B

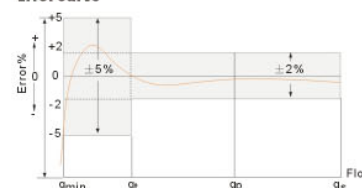
Technical data:

Nominal size DN(mm)	Class of measurement	Overload flow-rate q_3 (m ³ /h)	Permanent flow-rate q_4 (m ³ /h)	Transitional flow-rate q_5 (l/h)	Minimum flow-rate q_{min} (l/h)
15	B	3	1.5	120	30
20	B	5	2.5	200	50
25	B	7	3.5	280	70
32	B	12	6.0	480	120
40	B	20	10	800	200
50	B	30	15	3000	450

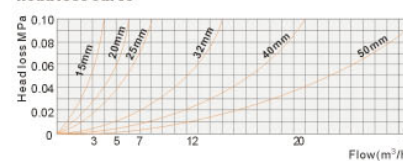
Overall dimensions and weight

Type	Size (mm)	Length (mm) L	Width (mm) W	Height (mm) H	Connecting Thread D	Weight (kg)
LXSG-15E i/F	15	165	99	104	G1 1/4" B	1.5
LXSG-20E i/F	20	195/190	99	106	G 3/4" B	1.7
LXSG-25E i/F	25	225/260	104	120	G 1" B	2.4
LXSG-32E i/F	32	230/260	104	120	G1 1/4" B	2.8
LXSG-40E i/F	40	245/300	120	155	G1 1/2" B	5.1
LXSG-50E i/F	50	280/300	125	155	G 2" B	7.2

Error curve



Head loss curve

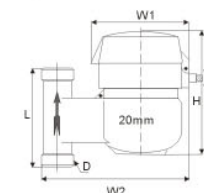
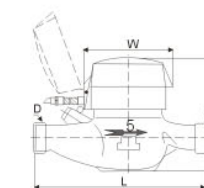
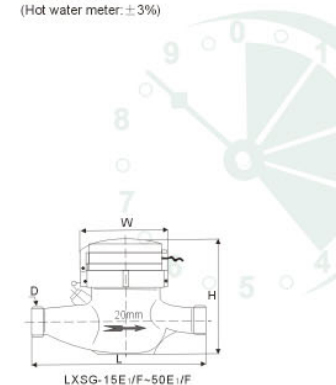


Working condition:

- Water temperature < 50 °C (Hot water meter < 90 °C)
- Water pressure ≤ 1MPa (PN: 1.6MPa/16bar)
- $\Delta P \leq 0.1$ MPa

Accuracy:

- From minimum flow-rate (q_{min}) inclusive, to transitional flow-rate (q_t), exclusive: $\pm 5\%$
- From transitional flow-rate (q_t) inclusive, to overload flow-rate (q_3), exclusive: $\pm 2\%$ (Hot water meter: $\pm 3\%$)



ZHEJIANG YOUNIO WATER SUPPLY EQUIPMENT CO.,LTD
 Add: No. 3-35, Wushan Thorp, Chengxin Avenue, Wenling, Zhejiang, China
[Http://www.younio.com](http://www.younio.com)
 E-mail: watermeter@younio.com

Tel: +86-576-8696684
 Fax: +86-576-86961184



Removable Horizontal Dry Type Woltman Meter

Features:

- Dry-dial, magnetic drive
- Vacuum sealed register, frost resistant, keeps clear reading for long time
- Removable measuring unit, easy installation and maintenance
- Measuring high flowrate with low head loss
- Remote transmission device can be added upon request
- Many kinds of sensors, such as Reed Switch, Hall and Weagand can be supplied upon request
- Pulse output may be 10l/pulse, 100l/pulse, 1000l/pulse
- The meters conform to ISO4064 Standard Class B
- The meter are available with LCD reading register

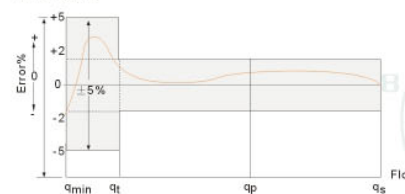
Technical data:

Nominal size DN(mm)	Class of measurement	Overload flow-rate q_1 (m ³ /h)	Permanent flow-rate q_2 (m ³ /h)	Transitional flow-rate q_3 (l/h)	Minimum flow-rate q_{min} (l/h)	Minimum reading M_1 (m ³)	Maximum reading M_2 (m ³)
50	B	30	15	3.0	0.45	0.01	999999
65	B	50	25	5	0.75	0.01	999999
80	B	80	40	8	1.2	0.01	999999
100	B	120	60	12	1.8	0.1	999999
125	B	200	100	30	3	0.1	999999
150	B	300	150	30	4.5	0.1	999999
200	B	500	250	30	50	0.1	999999
250	B	800	400	30	80	0.1	999999
300	B	1200	600	30	18	0.1	999999

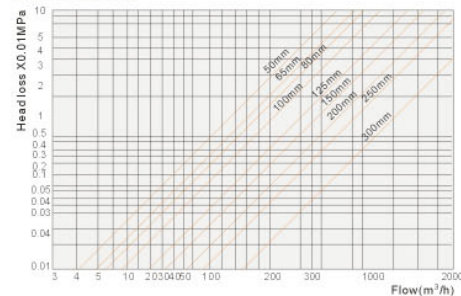
Overall dimensions and weight

Type	Size (mm)	Length (mm) L	Width (mm) W	Height (mm) H	Outer diameter of flange D(mm)	The center diameter of connecting bolt D1(mm)	Connecting bolt (Pcs.)	Weight (kg)
LXLC-50	50	200	172	247	165	125	4 × M16	12
LXLC-65	65	200	185	260	185	145	8 × M16	13
LXLC-80	80	225	200	264.5	200	160	8 × M16	15
LXLC-100	100	250	225	271.5	220	180	8 × M20	19
LXLC-125	125	250	250	295	250	210	8 × M20	23
LXLC-150	150	300	285	301.5	285	240	8 × M20	30
LXLC-200	200	350	340	358.5	340	295	12 × M20	42
LXLC-250	250	400	395	413.5	395	350	12 × M20	51
LXLC-300	300	450	445	463.5	445	400	12 × M20	63

Error curve



Head loss curve

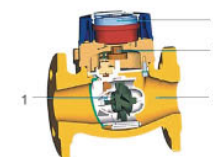
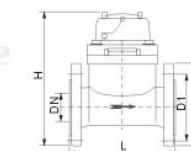
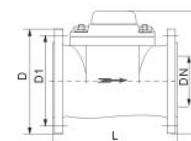
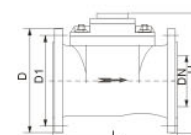


Working condition:

- Water temperature $\leq 50^\circ\text{C}$ (Hot water meter $\leq 90^\circ\text{C}$)
- Water pressure $\leq 1\text{MPa}$ (PN: 1.6MPa/16bar)
- $\Delta P \leq 0.03\text{MPa}$

Accuracy:

- From minimum flow-rate (q_{min}) inclusive, to transitional flow-rate (q_t), exclusive $\pm 5\%$
- From transitional flow-rate (q_t) inclusive, to overload flow-rate (q_1), exclusive $\pm 2\%$ (Hot water meter $\pm 3\%$)



ZHEJIANG YOUNIO WATER SUPPLY EQUIPMENT CO.,LTD
 Add:No.3-35,Wushan Thorp,Chengxin Avenue,Wenling,Zhejiang,China
 Http://www.younio.com
 E-mail:watermeter@younio.com

Tel:+86-576-8696684
 Fax:+86-576-86961184