



MegaTron XT

TOUCH SCREEN CONTROLLER

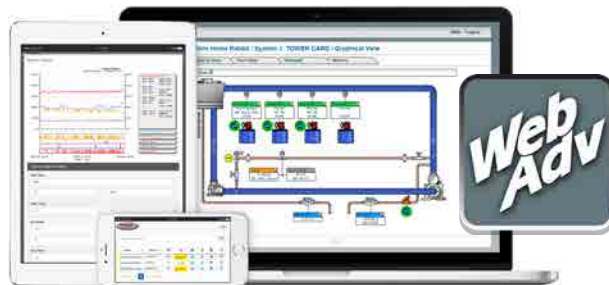
The MegaTron XT offers the widest range of features combined with WebAdvantage remote communications making it an exceptional choice for commercial and industrial water treatment systems.

MICROPROCESSOR CONTROL OF:

Conductivity, pH, ORP, Chemical & Biocide Feed, Service Reports, 4-20mA In & Outs

KEY FEATURES

- Customizable LCD Display
- On Board History Graphs
- Single System Capability
- Simple Touch Screen Menu
- Internet Communications Included
- Up to 16 mA Inputs
- Customizable Notepad
- Multi-Level Security Code
- Wi-Fi Capable
- Non-Volatile Memory
- E-mail Alarm Capable
- Modbus and BACnet Options



PRODUCT OVERVIEW

The MegaTron XT touchscreen controller is the latest innovation in our highly acclaimed MegaTron product line.

Units can be configured to control a wide range of digital and analog inputs. Advanced relay logic and customization lets you configure a unit to meet your specific system needs.

XT touch units can control a single tower, boiler, wastewater or other industrial application and provide web based communications and reporting with WebAdvantage.

Build a ModelX T C P R F E — N8 V Z1

Step 1 system card functions

Conductivity	
B	Boiler with BE-34BC
C	Tower with TE-4A
C12	Low range with AL-4ASS
Misc Conductivity	
M	General range with DI-4A
M4	General range with TE-4A
pH	
P	Single set point with TPE-21
Q	Dual set point with TPE-21
ORP	
R	Standard with TOE-21
Feed Timers	
F	Five selectable
Flow Assembly	
E	Float style flow switch, PVC
E6	Flow input only

Step 2 whole unit options

XT standard features include 5 control relays with prewired USA cords and WebAdvantage communications. List any desired options in alphabetical order.

Power Cord Options		100-230 VAC except A22		mA In/Out Signals		16 signals max	
A	All 1/2" FNPT conduit connections			N4	(4) mA inputs		
A2	Class F cord, no relay pigtails, CE mark			N8	(8) mA inputs		
A3	Liquid tight only, CE mark			N12	(12) mA inputs and (4) outputs		
A5	USA power cord, no relay pigtails			N16	(16) mA inputs and (0) outputs		
A7	Class I cord, no relay pigtails, CE mark			O4	(4) mA isolated outputs		
A8	Prewired USA cord, 1/2" conduit relay			O8	(8) mA isolated outputs		
A22	24 VDC power instead of 100-230 VAC						
Communication Options		WebAdv standard		Accessories			
H2	Adds Wi-fi module to built-in WebAdv coms			T	Configured for mounting of separately ordered CELLADV-0-12 or -24 inside controller		
H3	No active WebAdvantage communications			V	24 VDC power for external signals		
H25	Dual network w/ Modbus TCP/IP read/write			W	(5) additional flowmeter pulse inputs		
H26	Dual network w/ BACnet TCP/IP read/write			Y	ETL Agency Listings (USA, CSA)		
Relay Options		(2.5 amp each)		Z	Black display cover		
K1	(5) relay card not connected to power			Z1	Clear display cover		
K2	(5) relay card all set for dry contact						
K3	No control relays						

Tower / general range conductivity sensors include a temperature reading. Additional sensor types are available. Consult dealer for additional options.

Specifications

Electrical Input	100-230 VAC, 50/60 Hz	Relative Humidity	0 to 100%
Relay Outputs	Individually fused and 2.5 amps. Dry contact limited to 2.5 mA at 28 VDC.	Conductivity Control	µS/cm, mS/cm, PPM scales up to 50,000 depending on sensor selection
Display	6.875" Diagonal LCD Touch Screen	pH Control	0-14 with single or optional dual set point
Digital Inputs	Inputs have 10K Ω pullup to 3.3 VDC from open collector open drain output	ORP Control	+/- 1,000 mV, 2nd set point timer linked
Flow Totalizing Inputs	10K Ω pullup to 5 VDC max rate 2.5 KHz from open collector open drain output	Accuracy	+/- 1% of scale
mA Inputs	Optical isolation, 250 Ω / 5 VDC @ 20 mA. Loop voltage to not exceed 30 VDC.	Selectable Feed Timers	Water meter pulse, Percent, Post, Limit, Recycle, and 28 day with reminder 1 for loss flow.
mA Outputs	Non-isolated. 12 VDC max load = 400 Ω. Isolated ext 24 VDC max load = 800 Ω.	mA Input Control	Customizable to desired range and scale
Ethernet	DHCP or static capable with 10/100 WiFi 802.11 (b/g/n)	mA Output	Proportional with second input conditioning
Approvals	CE, UL61010-1/CSA C22.2 No. 61010-1-12 + A1:2022 (R2022)	Tower probes supplied in 3/4" quick release PVC tees. pH and ORP probe bodies are CPVC.	
Enclosure	NEMA 4X style polycarbonate	TE-4A	150 psi (10.3 bar), 140°F (60°C) max
Ambient Temp	0° to 125°F (-17° to 52°C)	TPE-21	100 psi (6.8 bar), 140°F (60°C) max
Shipping Weight	Approximately 10 lbs. (4.536 kg)	TOE-21	100 psi (6.8 bar), 140°F (60°C) max
Dimensions	11" (27.94cm) W x 11.75" (29.84 cm) H	FS-OC (flow switch)	140 psi (9.6 bar), 140°F (60°C) max
		AL-4ASS	100 psi (6.8 bar), 212°F (100°C) max
		BE-32C	250 psi @ 400°F, SS/PEEK with 1" cross



4700 Harold-Abitz Dr
Muskogee, OK 74403

www.advantagecontrols.com

918-686-6211 phone
918-686-6212 fax

2025-11-06