

XSCPRF3E-A7Y-3P2S SYSTEM

MANUFACTURED IN AUSTRALIA TO SUIT THE HARSHTEST CONDITIONS. THE SERIES IS DESIGNED TO ACCURATELY DELIVER TREATMENT PROGRAMS TO EXCEED THE AUSTRALIAN STANDARDS, INCLUDING FEATURES TO ASSIST IN OPTIMIZING PERFORMANCE AND OUTCOMES AT SITE.

- **MICROPROCESSOR CONTROL OF:**
- CONDUCTIVITY, TEMPERATURE COMPENSATED
- ORP VIA 15MM MTR VALVE
- INHIBITOR FEED PUMP
- SEC BIOCIDES & CHEMICAL FEED PUMPS
- PH MONITORING AND OR CONTROL
- HISTORY VIA CSV & REPORTING ON SCREEN
- HIGH LEVEL INTERFACE
- 4-20mA INPUTS & OUTPUTS
- USB HISTORY DOWNLOAD
- MULTI LEVEL SECURITY

KEY FEATURES INCLUDE

- Customizable LCD Display
- Simple ATM style Menu
- Selectable calibration
- Internet communication option
- High Quality PVC manifold components
- Five Multi Programmable timers
- Two Water Meter inputs (Make Up - Bleed)
- Four optional Water meter inputs
- Bleed failed alarm (Start or Stop)
- Relay test, Status, History & Force on timers
- Upgradeable firmware, configuration save file
- Motorized Bleed valve, power open spring closed
- Peristaltic Pumps, high quality squeeze tubing
- Flow sensor + five digital inputs
- Multi relay interlocking

XSCPRF3E-A7Y-3P2S SPECIFICATIONS

ELECTRICAL

- Electrical Input: 95-240 VAC
- 1 x Bleed MTR Valve 15mm - 240 VAC 100mA
- 1 x ORP MTR Valve 15mm - 240 VAC 100mA
- 2 x 2 LPH dose pumps - 240 VAC > 100mA each
- 1 x 1 LPH dose pump - 240 VAC > 100mA
- 1 x assignable dry contact or power relay 240VAC 2.5AMP Note: Jumper to configure as Dry Contact

OPERATIONAL

- Conductivity Control: uS/cm, ms/Cm, PPM scales with a range to 15,000 using the E-4A sensor
- Temperature reading and compensation E-4A
- ORP sensor, low foul double junction OE-21
- pH sensor, low foul double junction PE-21
- Accuracy: +/- 1%
- Feed Timers (5) Selectable from:
 - 28 Day with Pre Bleed & Bleed Lockout
 - Recycle with ON-OFF timer (HH:MM:SS)
 - Percent of a time period
 - Post with 1-100% of post bleed or other time selectable + limit timer.
 - Pulse input uses water meter readings to dose proportionally and with accumulator.
- Water Meter Inputs 2 standard pulse or contact type
- Water meter- four aux flow meter inputs (optional)
- Five digital inputs, low level, external stop, alarm

MANIFOLD/BACKBOARD

- Schedule 80 20mm PVC manifold with serviceable isolation valves & non Return valve & sample point
- 600mm x 460mm x 15mm PVC backboard



XS CONTROLLER SPECIFICATIONS

ELECTRICAL

- Electrical Input: 95-240 VAC
- Control output: to input voltage (95-240 VAC)
- Control relays (5) fused at 2.5A per relay

OPERATIONAL

- Display: UV protected 240 x 128 Graphic LCD
- Conductivity Control: uS/cm, mS/Cm, PPM scales with ranges up to 50,000 depending on the sensor selection.
- Accuracy: +/- 1%
- Feed Timers (5) Selectable from:
 - 28 Day with Pre Bleed & Bleed Lockout
 - Recycle with ON-OFF timer (HH:MM:SS)
 - Percent of a time period
 - Post with 1-100% of post bleed or other time selectable + limit timer.
 - Pulse input uses water meter readings to dose proportionally and with accumulator.
- Environment: -17 - 52 Celsius, Humidity: 0-100%

ENCLOSURE

- Heavy duty high impact abs (Nema 4X)
- Lockable Casketed Lexan Viewing door

XS MP2-B PUMPS SPECIFICATIONS

ELECTRICAL

- Electrical Input: 240 VAC
- 100mA operating draw
- Each powered by XS control relay

OPERATIONAL

- Peristaltic fixed flow in 1 liter & 2 liter per hour
- Maximum head pressure 3 bar

HARDWARE

- Reinforced PP casing
- IP65 Protection rating
- Polycarbonate clear view cover panel
- Clip mounted to backboard for ease of service
- Squeeze tube Santoprene thick wall 3 bar
- PVDF injection valve
- PVDF drum weight
- Suction tube 2m clear PVC
- Discharge tube 2m PE

XS MOTORIZED VALVES SPECIFICATIONS

ELECTRICAL

- Electrical Input: 240 VAC
- Less than 500mA operating current
- Power open Spring/Capacitor close
- Powered by XS control relay

OPERATIONAL

- Maximum pressure 10 Bar
- Open/Close Time less than 5 seconds
- Actuator rotation - 90 degrees
- Operating Temperature -15 - 50 Degree Celsius
- Liquid temperature 2 - 90 degree Celsius

HARDWARE

- Reinforced PP Electronic casing
- IP67 Protection rating
- Polycarbonate clear view direction indicator
- Valve body is 304 Stainless Steel
- Seals are PTFE
- Size of valve is DN15

PACKAGE UPGRADE OPTIONS

COMMUNICATIONS:

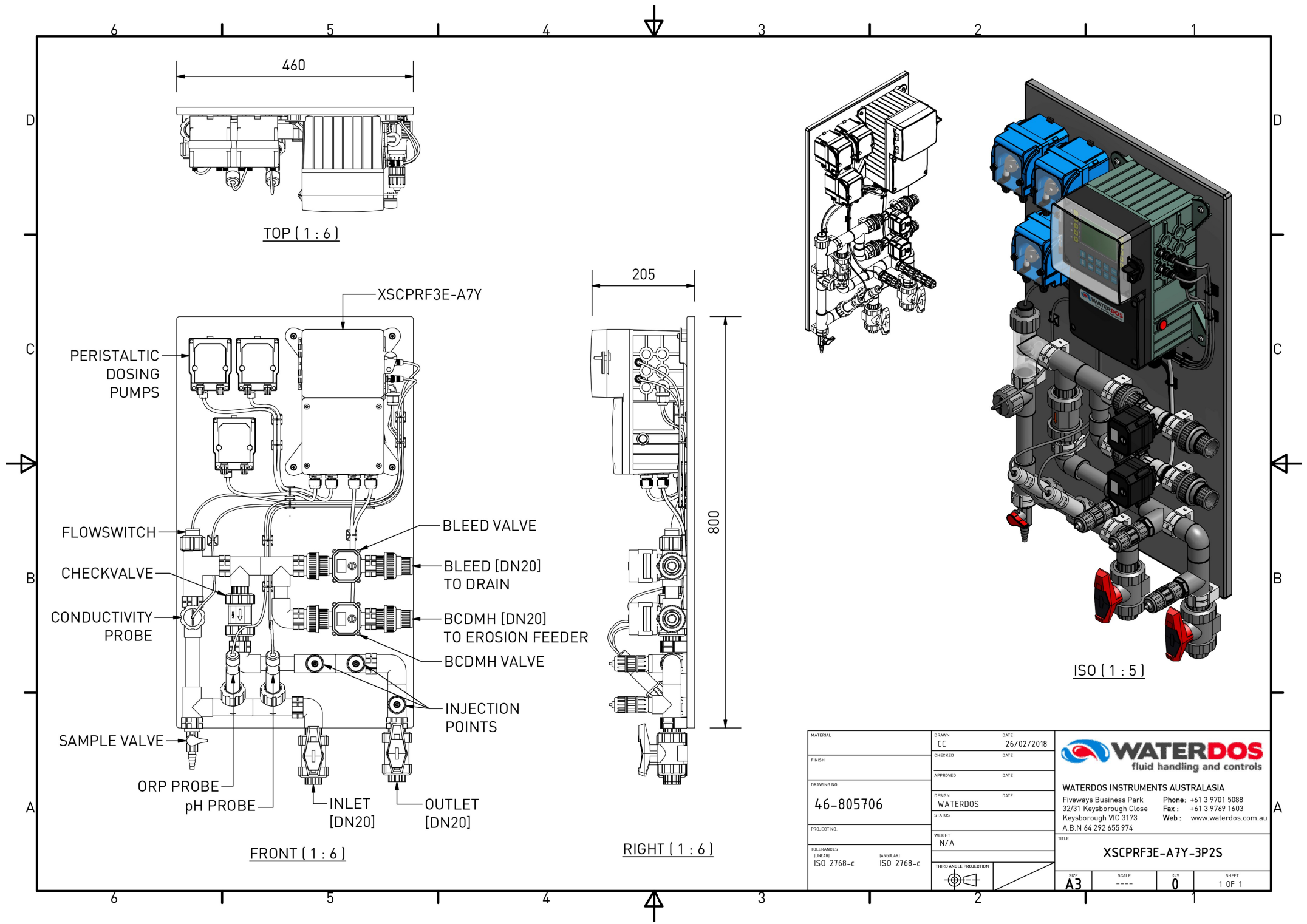
- ADD-N4 - fit 4-20mA analogue input card
- ADD-O4 - fit 4-20mA analogue output card
- ADD-H11-XS - fit MODBUS TCP/IP card
- ADD-H21-XS - fit BACnet TCP/IP card
- ADD-CVT - fit a Ethernet to serial converter
- ADD-H1-XS - fit local Ethernet communication card
- ADD-H1C-xs - fit ADD-H1-XS with 3G-4G router

INSTALLATION:

- ADD-ENCLOSURE - fit the above controller and pumps into a 600mm x 400mm x 250mm lockable polycarbonate enclosure with manifold mounted separately on 15mm PVC backing board.
- ADD-ENCLOSURE-FULL - fit the above controller, pumps & manifold into a 800mm x 600mm x 300mm powder coated lockable enclosure
- CIRCUMPUMP-1HP - select a circulation pump to boost or supply flow to controller manifold
- SKID-X1 - Fit equipment to self stand on a 304 stainless steel skid (suitable for normal doorway entry)

DISTRIBUTED BY:





MATERIAL	CC	DATE	26/02/2018
FINISH	CHECKED	DATE	
DRAWING NO.	APPROVED	DATE	
46-805706	DESIGN	DATE	
PROJECT NO.	STATUS		
	WEIGHT		
	N/A		
TOLERANCES (LINEAR)	ISO 2768-c	(ANGULAR)	ISO 2768-c
THIRD ANGLE PROJECTION			
WATERDOS fluid handling and controls			
WATERDOS INSTRUMENTS AUSTRALASIA Fiveways Business Park 32/31 Keysborough Close Keysborough VIC 3173 A.B.N 64 292 655 974			
Phone: +61 3 9701 5088 Fax: +61 3 9769 1603 Web: www.waterdos.com.au			
TITLE XSCPRF3E-A7Y-3P2S			
SIZE A3	SCALE ---	REV 0	SHEET 1 OF 1