

## XSCF3-A7Y-4GPO1S

Manufactured in Australia to suit the harshest conditions. This series is designed to provide a compact solution for your water treatment requirements. The use of high quality components & sensor make servicing easier & ensure consistent results. The heart of the system is the XS controller providing precise & flexible treatment options to suit changing environmental conditions.

### KEY FEATURES & CAPABILITIES:

- Conductivity/TDS control with Temp compensation
- Primary Biocide Timer with Pre-bleed & lockout
- Secondary Biocide Timer with Pre-bleed & lockout
- Inhibitor via multi-selection timer interlocked
- Dispersant via multi-selection timer interlocked
- Water usage & volume alarm of up to six meters
- Flow switch for alarming & automating control
- Interlinked dosing & chemistry control
- High Level Interface via BACnet or Modbus capable
- Web Based remote control, alarming & auto reporting
- USB for download and upload of data
- On screen graphic view of measures
- Layered security & program change event memory
- Motorised Bleed valves to inhibit fouling potential
- Five digital inputs for low level chemical alarms
- High quality servicable flow manifold components
- Reliable & easy to maintain Peristaltic dose pumps

### GENERAL SPECIFICATIONS:

- 1 x Electrical inputs 230-240VAC max 10 amp
  - Controller less than 2 amp
- XS Controller control outputs at 240VAC with non volatile memory
  - 1 x 15mm Motorised valves, less than 100mA each
  - 4 x Weather resistant GPOs run from 4 x individual control relays rated to 2amp each
- Conductivity measure, Us/cm, ms/Cm, PPM scale is 0-15000 using E-4A sensor
- Temperature reading & compensation via E-4A sensor
- Accuracy: +/- 1%
- Feed Timers (5) selectable include:
  - 2 x Water Meter inputs , pulse or dry contact
  - 5 x Auxiliary flow meter inputs, pulse or dry contact
- Manifold 20mm Sched. 80 PVC with servicable parts

# XSCF3-A7Y-4GPO1S

## XS CONTROLLER SPECIFICATIONS:

### ELECTRICAL

- Electrical inputs 95-240VAC
- Control output = input voltage
- 5 x Control relays fuse protected to 2.5amp each
- XS Controller control utilises non volatile memory
- Enclosure is heavy duty high impact ABS IP67
- Lockable Gasketed Lexan viewing door to keypad

### OPERATIONAL

- Conductivity measure, Us/cm, ms/Cm, PPM scale is 0-15000 using E-4A sensor
- Temperature compensation & measure
- Accuracy: +/- 1%
- 2 x Water Meter inputs
- 5 x Auxiliary flow meter inputs
- Flow sensor 20mm incorporated to manifold
- 5 x digital inputs for low level tank etc
- 5 x timers, selectable types, 28 day, percent, recycle, pulse, post bleed, with bleed
- Environment -17-55 Celsius, Humidity 0-100%

## MOTORISED VALVE SPECIFICATIONS:

### ELECTRICAL

- Powered from control relay of XS controller
- Electrical input 240VAC
- Less than 500mA operating current
- Power open & spring assisted capacitor close

### OPERATIONAL

- Maximum pressure 10 bar
- Open/Close time less than 5 seconds
- Actuator rotation is 90 degree
- Operating Temperature -15-50 Degree
- Liquid Temperature 2 -90 degree celsius

### HARDWARE

- Reinforced PP electronic casing
- IP67 protection rating
- Polycarbonate clear view direction indicator
- Valve body & ball are 304 stainless steel
- Seals are PTFE
- Size of valve standard is DN15
- Note: valves on skid can be supplied as DN20 on request

## INSTALLATION OPTIONS:

### COMMUNICATIONS:

- High level interface via BACnet
- High Level Interface via MODBUS
- High level interface via Lonworks
- Web based monitoring, control & reporting
- Ethernet port for local site connection via RJ45
- 4G router/modem package for mobile network
- Alarming via email on out of spec settings
- Network 4G hub for multi type connections
- Low level interface via 4 x 4-20mA
- Low level inputs via 4-20mA

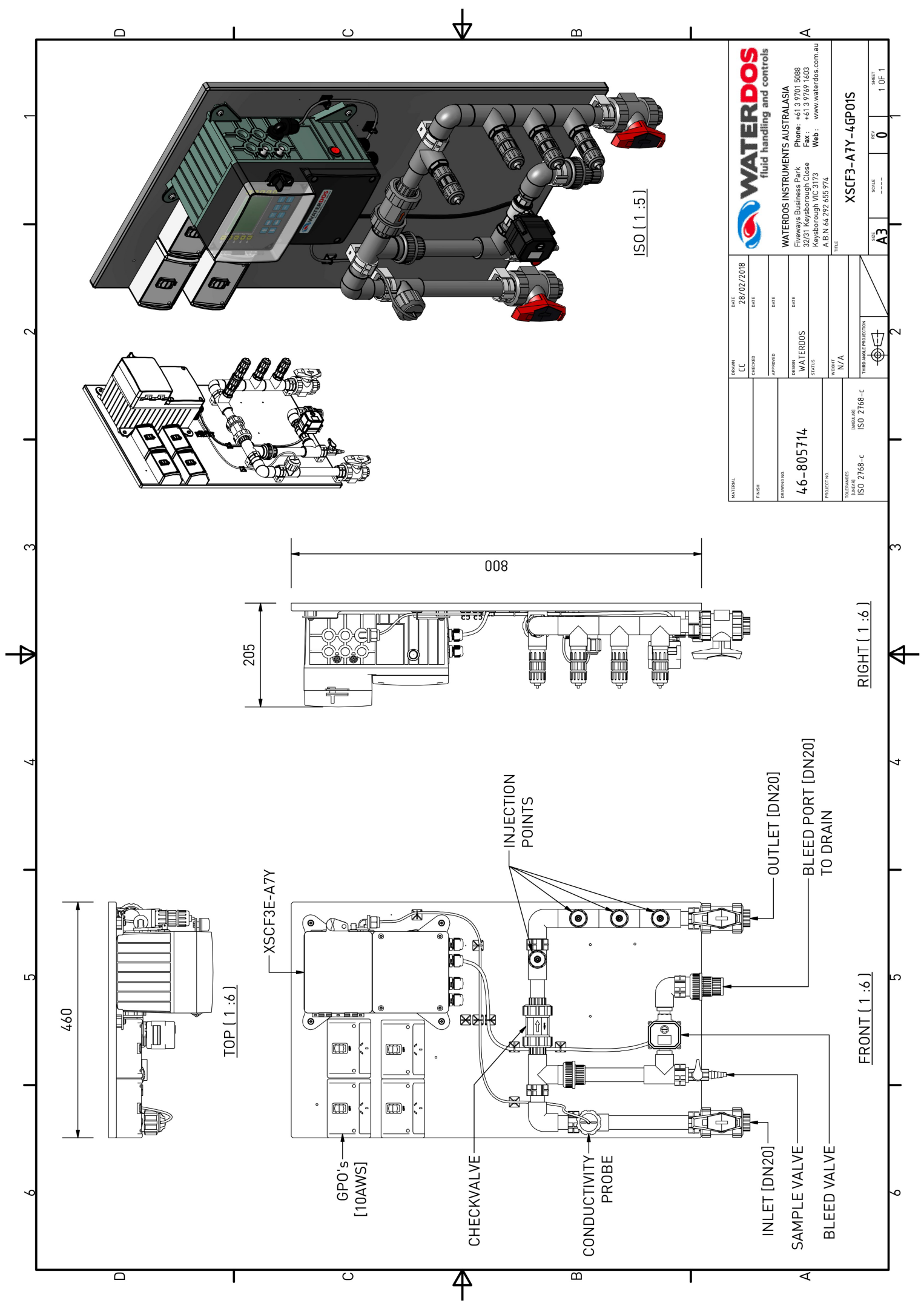
### CORROSION RACK


- ASTM compliant with flow meter & control
- 2 or 4 x quick release coupon holders with nylon coupon mounting assembly
- Electronic **realtime corrosion measurement**

### OUTER ENCLOSURES

- House XS controller & pumps is polycarbonate 600 x 400 x 250mm lockable
- House complete treatment system in outer enclosure

**CIRCULATION PUMP**, provide independent 24/7 flow and treatment of tower water



MATERIAL		DATE		 <b>WATERDOS</b> fluid handling and controls		TITLE			
CC	28/02/2018								
CHECKED	DATE								
APPROVED	DATE								
FINISH	DESIGN	DATE	<b>WATERDOS INSTRUMENTS AUSTRALASIA</b> Fiveways Business Park 32/31 Keyborough Close Keyborough VIC 3173 Web : www.waterdos.com.au A.B.N 64 292 655 974			XSCF3-A7Y-4GP01S			
	WATERDOS								
	STATUS								
DRAWING NO.  46-805714	PROJECT NO.  N/A						WEIGHT		
TOLERANCES UNLESS INDICATED		ISO 2768-c		THIRD ANGLE PROJECTION		SIZE <b>A3</b>	SCALE ---	REV <b>0</b>	SHEET 1 OF 1