



XSCPRF3E-3P2S-SKDX1-25KG

MANUFACTURED IN AUSTRALIA TO MEET OUR HARSH CONDITIONS & ENSURE THE BEST RESULTS POSSIBLE FOR YOUR WATER TREATMENT NEEDS.

- **MICROPROCESSOR CONTROL**
- CONDUCTIVITY, TEMPERATURE COMPENSATED
- INHIBITOR FEED PUMP
- ORP VIA MTR VALVE TO 25KG EROSION FEEDER
- PH MONITORING & OR CONTROL
- SEC BIOCIDES FEED PUMPS
- EXTRA CHEMICAL FEED PUMP
- HISTORY REPORTING
- HIGH LEVEL INTERFACE
- 4-20mA INPUTS & OUTPUTS
- USB HISTORY DOWNLOAD
- MULTI LEVEL SECURITY
- ENCLOSURE FOR BETTER PROTECTION
- STAINLESS SKID MOUNTED
- ASTM COMPLIANT CORROSION RACK
- INDEPENDANT CIRCULATION PUMP

KEY FEATURES INCLUDE

- Customizable LCD Display
- Simple ATM style Menu
- Selectable calibration
- Internet communication option
- High Quality PVC manifold components
- Five Multi Programmable timers
- Two Water Meter inputs (Make Up - Bleed)
- Four optional Water/flow meter inputs
- Bleed failed alarm (Start or Stop)
- Relay test, Status, History & Force on timers
- Motorized Bleed valve, power open spring closed
- Peristaltic Pumps, high quality squeeze tubing
- Flow sensor + five digital inputs
- Multi relay interlocking

SPECIFICATIONS

ELECTRICAL

- 2 x Electrical Inputs: 230-240 VAC (controller, Pump)
- 2 x Motorised Valves 15mm - 240 VAC 100mA for bleed and ORP control to 12kg tablet feeder
- 2 x 2 LPH dose pumps - 240 VAC > 100mA each
- 1 x 1 LPH dose pump - 240 VAC > 100mA

OPERATIONAL

- Conductivity Control: uS/cm, ms/Cm, PPM scales with a range to 15,000 using the E-4A sensor
- Temperature reading and compensation E-4A
- ORP sensor, low foul double junction OE-21
- pH sensor, low foul double junction PE-21
- Accuracy: +/- 1%
- Feed Timers (5) Selectable from:
 - 28 Day with Pre Bleed & Bleed Lockout
 - Recycle with ON-OFF timer (HH:MM:SS)
 - Percent of a time period
 - Post with 1-100% of post bleed feed.
 - Pulse input uses water meter readings to dose proportionally and with accumulator.
- Water Meter Inputs 2 standard pulse or contact type
- Water meter- four aux flow meter inputs (optional)
- Five digital inputs, low level, external stop, alarm

SKID/MANIFOLD/BACKBOARD

- Stainless Steel 304, weld finish, mount holes, stainless screws, bolts nuts and washers (see drawing over)
- Schedule 80 20mm PVC manifold with serviceable isolation valves & non Return valve & sample point mounted onto a PVC backboard

XS CONTROLLER SPECIFICATIONS

ELECTRICAL

- Electrical Input: 95-240 VAC
- Control output: to input voltage (95-240 VAC)
- Control relays (5) fused at 2.5A per relay

OPERATIONAL

- Display: UV protected 240 x 128 Graphic LCD
- Conductivity Control: uS/cm, mS/Cm, PPM scales with ranges up to 50,000 depending on the sensor selection.
- Accuracy: +/- 1%
- Feed Timers (5) Selectable from:
 - 28 Day with Pre Bleed & Bleed Lockout
 - Recycle with ON-OFF timer (HH:MM:SS)
 - Percent of a time period
 - Post with 1-100% of post bleed or other time selectable + limit timer.
 - Pulse input uses water meter readings to dose proportionally and with accumulator.
- Environment: -17 - 52 Celsius, Humidity: 0-100%

ENCLOSURES

xs controller

- Heavy duty high impact abs (Nema 4X IP67)
- Lockable Casketed Lexan Viewing door

Outer Enclosure

- controller & pumps mounted in a 600 x 400 x 250mm lockable polycarbonate enclosure

XS MP2-B PUMP SPECIFICATIONS

ELECTRICAL

- Electrical Input: 240 VAC
- 100mA operating draw
- Each powered by XS control relay

OPERATIONAL

- Peristaltic fixed flow in 1 liter & 2 liter per hour
- Maximum head pressure 3 bar

HARDWARE

- Reinforced PP casing
- IP65 Protection rating
- Polycarbonate clear view cover panel
- Clip mounted to backboard for ease of service
- Squeeze tube Santoprene thick wall 3 bar
- PVDF injection valve
- PVDF drum weight
- Suction tube 2m clear PVC
- Discharge tube 2m PE

DISTRIBUTED BY:

XS MOTORIZED VALVE SPECIFICATIONS

ELECTRICAL

- Electrical Input: 240 VAC
- Less than 500mA operating current
- Power open Spring/Capacitor close
- Powered by XS control relay

OPERATIONAL

- Maximum pressure 10 Bar
- Open/Close Time less than 5 seconds
- Actuator rotation - 90 degrees
- Operating Temperature -15 - 50 Degree Celsius
- Liquid temperature 2 - 90 degree Celsius

HARDWARE

- Reinforced PP Electronic casing
- IP67 Protection rating
- Polycarbonate clear view direction indicator
- Valve body is 304 Stainless Steel
- Seals are PTFE
- Size of valve is DN15

MAJOR SKID COMPONENTS

CIRCULATION PUMP

- ONGA 415 Centrifugal water pump
- Max working pressure 4 Bar
- Water Temp Range 1-70 Degrees Celsius
- Ambient Temp Maximum = 55 degree Celsius
- Voltage 230-240 VAC - Frequency 50Hz
- Continuously rated TEFC Motor
- Inbuilt Auto reset thermal overload
- Wet end 20% Glass filled ABS
- End Shield powder coated die cast Aluminium
- Shaft sleeved with Nylon on mild steel
- Impeller 20% glass filled polypropylene

ERESION FEEDER

- 25KG small bromine tablet capacity
- polypropylene with corrosive components
- Pressure rated to 3.5 Bar
- Easy fit compression lid with lock ring
- Pressure, drain & air release valves

CORROSION RACK

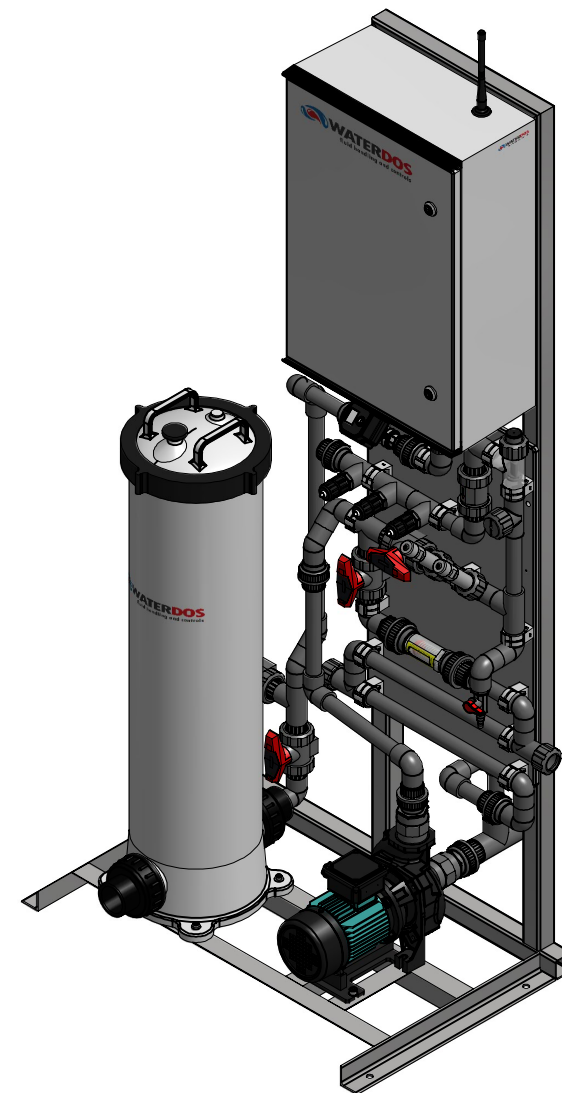
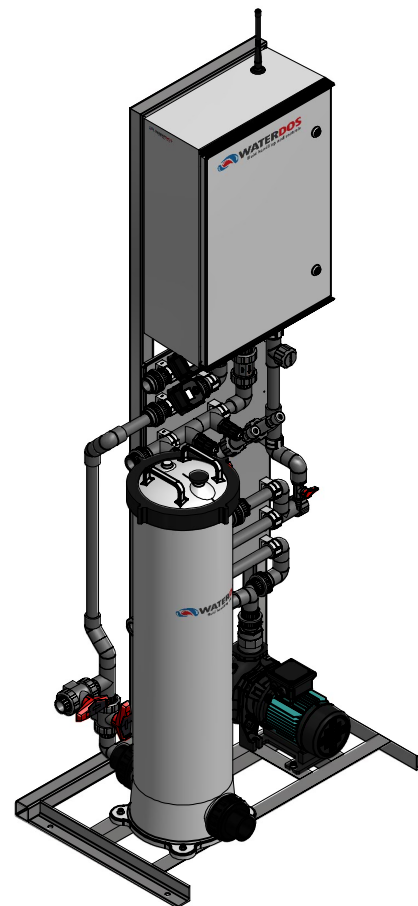
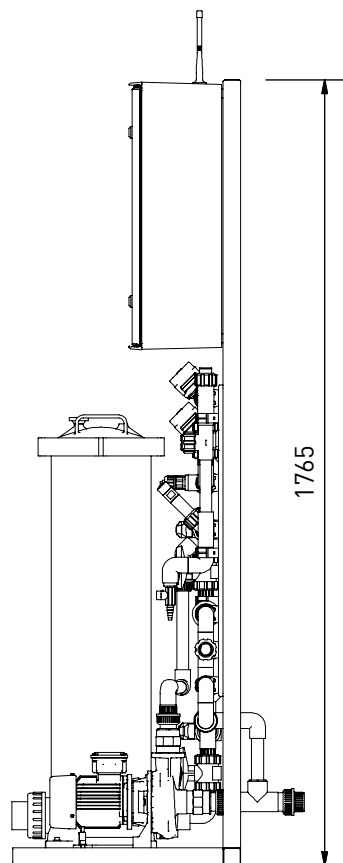
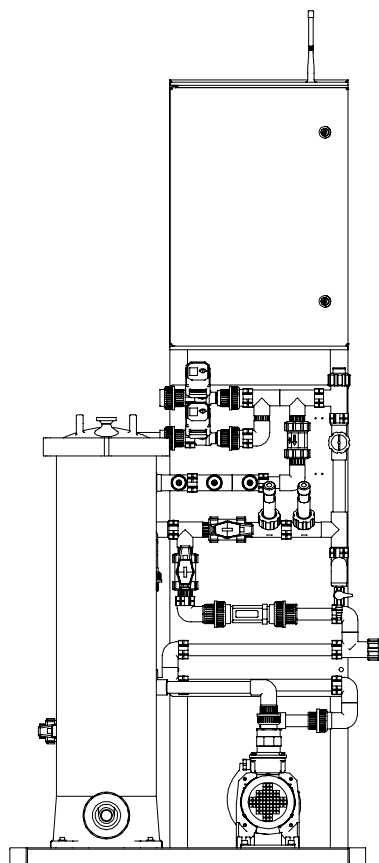
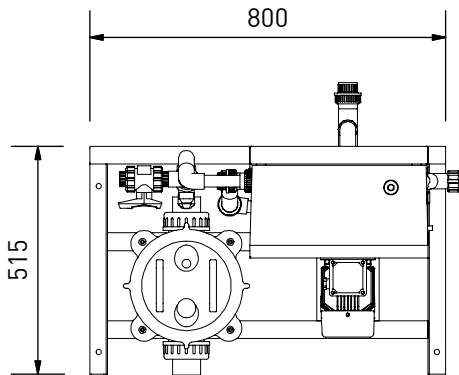
- ASTM compliant with flow meter & control
- 2 quick release coupon holders with nylon nut and bolt on isolatable loop


PACKAGE UPGRADE OPTIONS

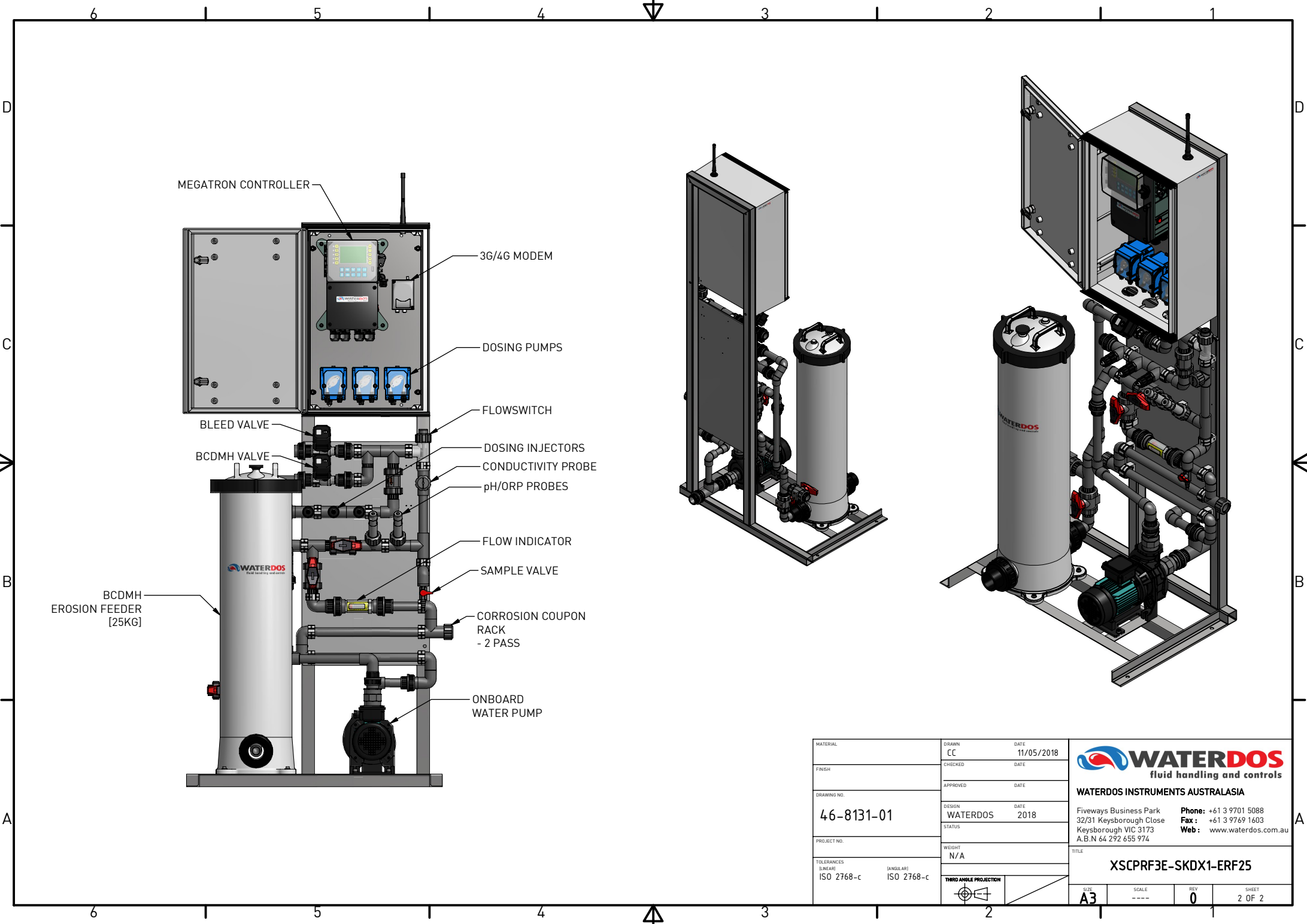
COMMUNICATIONS:


- ADD-N4 - fit 4-20mA analogue input card
- ADD-O4 - fit 4-20mA analogue output card
- ADD-H11-XS - fit MODBUS TCP/IP card
- ADD-H21-XS - fit BACnet TCP/IP card
- ADD-CVT - fit a Ethernet to serial converter
- ADD-H1-XS - fit local Ethernet communication card
- ADD-H1C-XS - fit ADD-H1-XS with 3G-4G router





MATERIAL	DRAWN CC	DATE 11/05/2018	 WATERDOS fluid handling and controls WATERDOS INSTRUMENTS AUSTRALASIA Fiveways Business Park 32/31 Keysborough Close Keysborough VIC 3173 A.B.N 64 292 655 974 Phone: +61 3 9701 5088 Fax: +61 3 9769 1603 Web: www.waterdos.com.au	
FINISH	CHECKED	DATE		
DRAWING NO. 46-8131-01	APPROVED	DATE		
PROJECT NO.	DESIGN WATERDOS	DATE 2018		
TOLERANCES (LINEAR) ISO 2768-c	(ANGULAR) ISO 2768-c	STATUS N/A	TITLE XSCPRF3E-SKDX1-ERF25	
THIRD ANGLE PROJECTION		WEIGHT N/A		
SIZE A3		SCALE ---	REV 0	SHEET 1 OF 2



MATERIAL	DRAWN CC	DATE 11/05/2018	 WATERDOS fluid handling and controls WATERDOS INSTRUMENTS AUSTRALASIA Fiveways Business Park 32/31 Keysborough Close Keysborough VIC 3173 A.B.N 64 292 655 974 Phone: +61 3 9701 5088 Fax: +61 3 9769 1603 Web: www.waterdos.com.au	
FINISH	CHECKED	DATE		
DRAWING NO. 46-8131-01	APPROVED	DATE		
PROJECT NO.	DESIGN WATERDOS	DATE 2018		
TOLERANCES (LINEAR) ISO 2768-c	(ANGULAR) ISO 2768-c	STATUS	TITLE XSCPRF3E-SKDX1-ERF25	
WEIGHT N/A		THIRD ANGLE PROJECTION		
SIZE A3		SCALE ----	REV 0	SHEET 2 OF 2