

DWG NO.

PES2L-BLHF PID

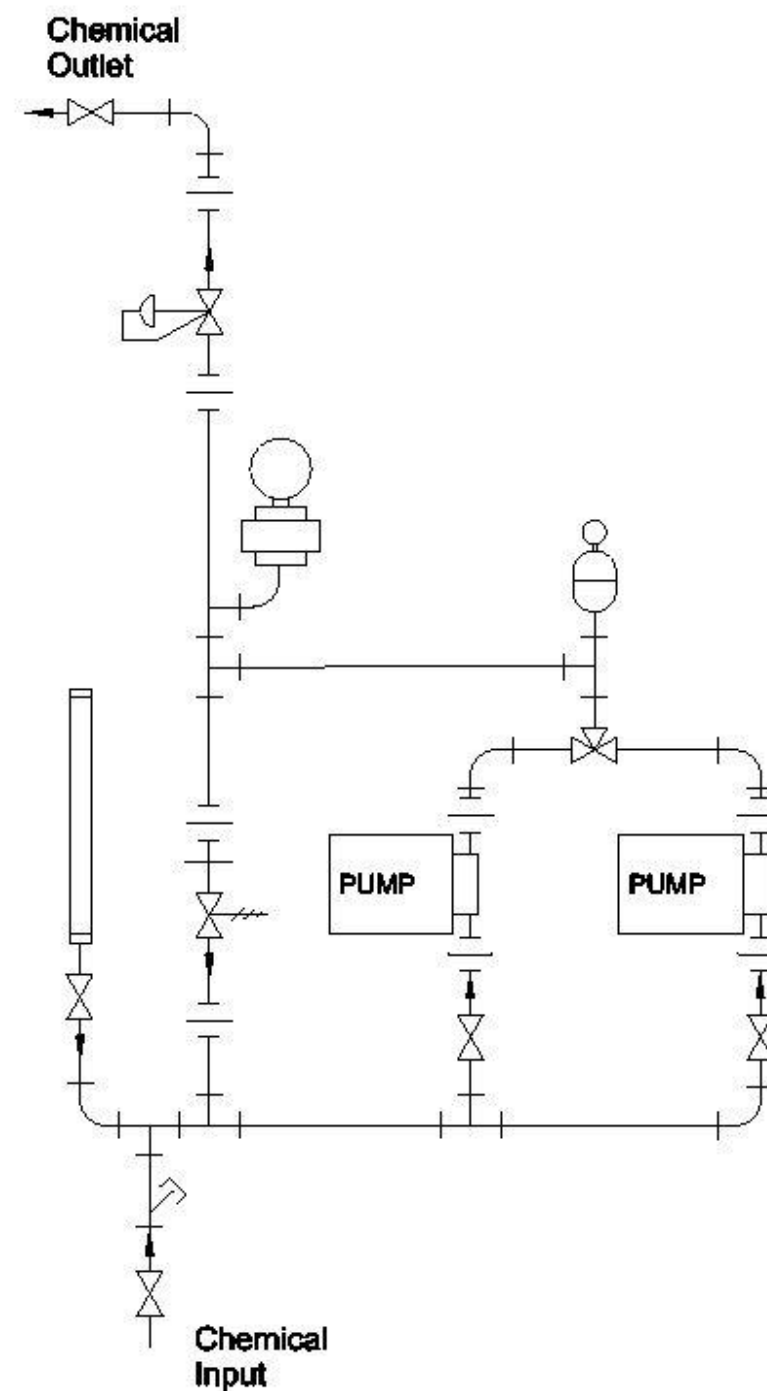
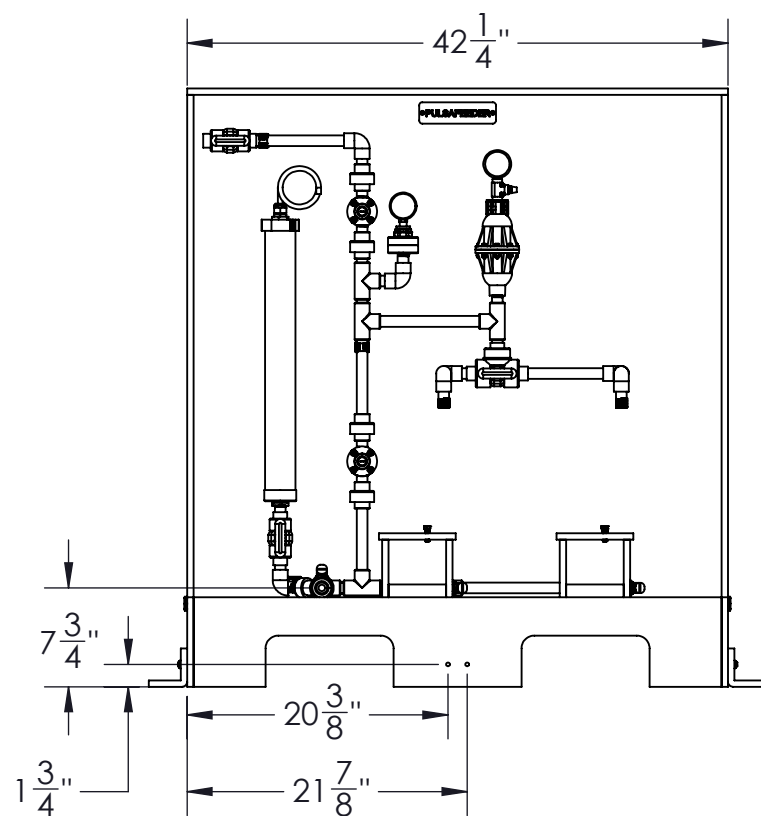
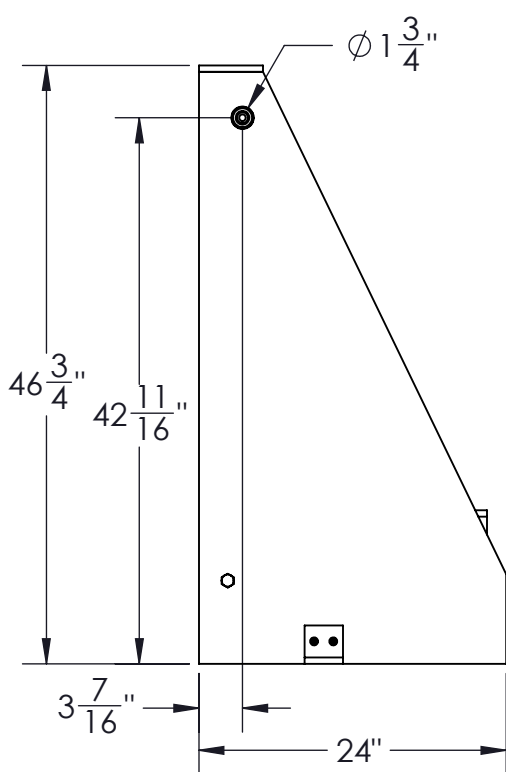
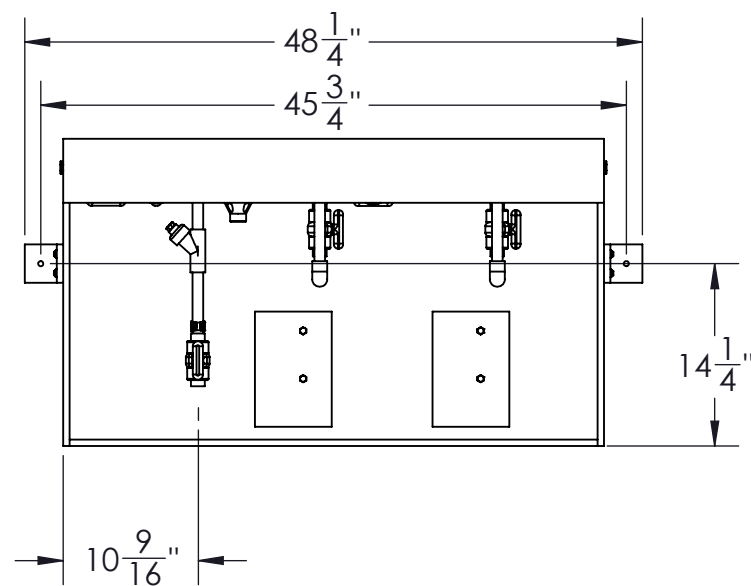
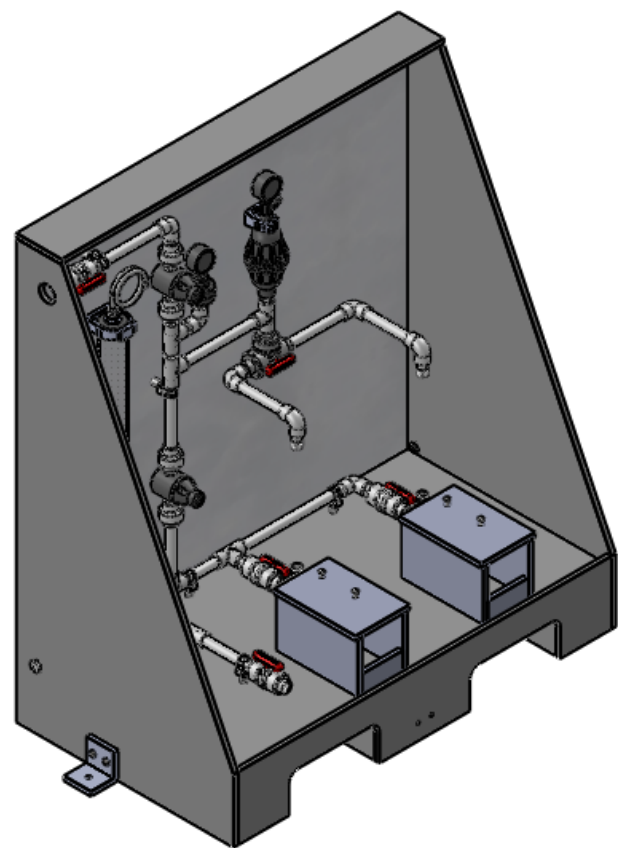
SHEET

1

OF

1

REV.	DESCRIPTION	DATE	MOD	CHK'D
A	RELEASE	6/21/2016	FP	CAW



	Y-STRAINER
	TRUE UNION BALL VALVE
	UNION
	TRUE UNION 3 WAY BALL VALVE
	BACK PRESSURE VALVE
	PRESSURE RELIEF VALVE
	PRESSURE GAUGE W/ ISOLATOR
	PULSATION DAMPENER
	CALIBRATION COLUMN

Customer Name:			
PO Number:			
Notes:			
INTERPRET GEOMETRIC TOLERANCING PER ASME Y14.5M-1994 UNLESS OTHERWISE SPECIFIED		DWN	FP
TOLERANCE		6/21/16	
X.X"	± .050"	CHK	CAW
X.XX"	± .015"		
X.XXX"	± .005"		
ANGLES	± 0°30'		
BREAK ALL SHARP EDGES .015" MAX. ALL DIMENSIONS IN INCHES			
MACHINED SURFACES ROUGHNESS 125Ra			
<p>PROPRIETARY DATA: THIS DOCUMENT DISCLOSES INFORMATION AND DATA IN WHICH PULSAFEEDER HAS PROPRIETARY RIGHTS. THE RIGHT TO REPRODUCE, USE OR DISCLOSE IN WHOLE OR IN PART EXCEPT BY WRITTEN PERMISSION IS PROHIBITED.</p>			
TITLE		BL DPLX LEAD STANDBY ASSEM - HIGH FLOW P&ID	
REV	SIZE	DWG NO	
A	B		PES2L-BLA PID
FILE		PES2L-BLA PID	
SCALE: 1:15		SHEET 1 OF 1	