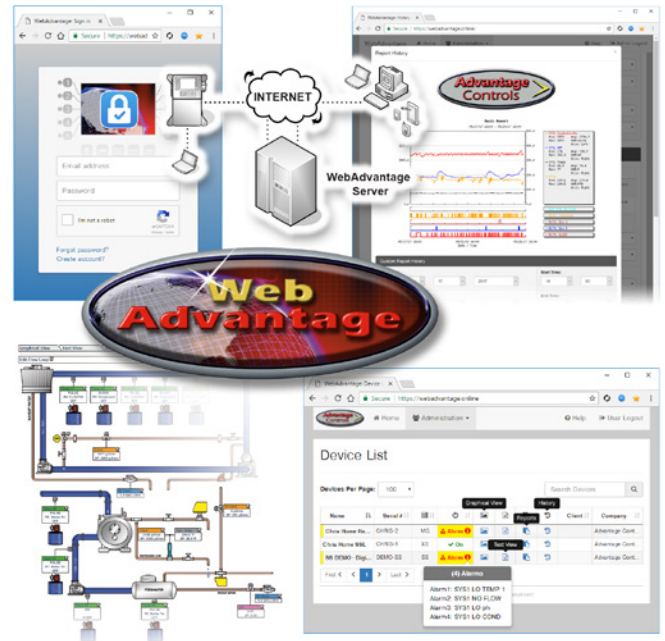


WEBADVANTAGE®

CLOUD-BASED CONTROL, MONITORING, ALARMING & REPORTING WITH MEGATRON MONITORS AND CONTROLLERS

Stay connected with **WebAdvantage®** to your operations with MegaTron installations. WebAdvantage® keeps you in constant contact with all of your online MegaTron controllers at one time, over the World Wide Web.



KEY FEATURES

- Advanced Encryption Security
- Change Settings Remotely
- No Software to Load
- SOC1 Type II Located
- Advanced Summary Page
- Email Alarm Notification
- Constant Connection
- Server Stored History
- Report Templates
- Enhanced Custom Reporting
- Company Logo Branding
- Easier Administrator Control
- Multi-Factor Authorization

APPLICATION

WebAdvantage® uses web-based communications with the newest, most reliable, and secure server technology for connection, control, and history management.

An exclusive summary view lets you check the status of all your connected MegaTrons on one screen. E-mail alerts from the server ensure that users are kept informed of any alarm conditions, including disconnection and power loss encountered by remote MegaTrons.

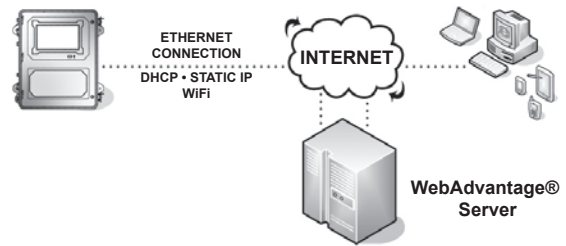
INTERNET COMMUNICATIONS

WebAdvantage® works for you by automatically e-mailing your custom-designed reports to whomever you want, when you want them. Reports can include probe, water meter, relay, and notepad history, along with many other items. The exclusive “summary” view combines important information from all of your connected MegaTrons in a single view when you log in to WebAdvantage®. E-mail alerts from the server ensure that users are notified of any and all problems, including alarm conditions, loss of communications connection, or loss of power.

Options to interface your MegaTron with the WebAdvantage® service:

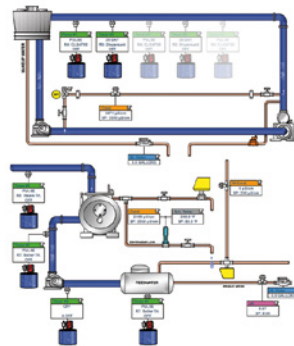
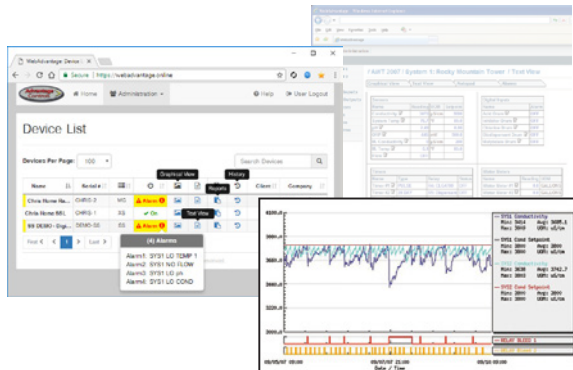
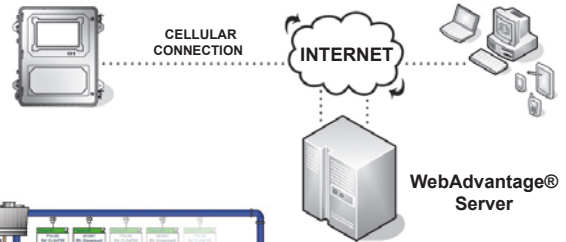
Local Area Network Connection

Units equipped with communication options use TCP/IP to access local networks via Ethernet or Wi-Fi. Units are configurable for DHCP and Static addressing for network access to the Internet, and communication with WebAdvantage®.



Cellular Router Connection

External cellular routers and data plans are available to connect communication card-equipped units to WebAdvantage® via cellular networks.



SECURITY FEATURES

- Virtualized Redundancy, Internet service providers, and co-locations
- Data encrypted in transmission, at rest, and backups
- Mobile device MFA
- Regular third party penetration testing and remediation
- Fine-grain access permission levels
- SSAE 18 SOC1 Type II audited datacenter
- Prioritized and regular system security patching
- Enterprise level next generation firewall appliance and switching
- Third Party SSL Website Encryption