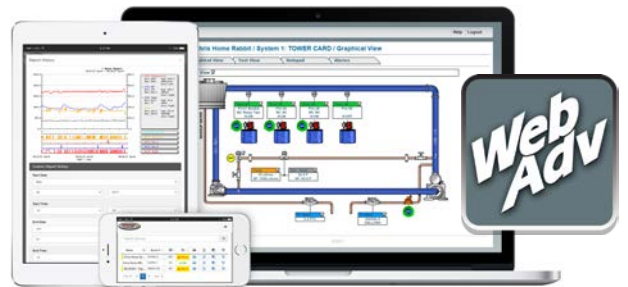


LIFTX

LIFT STATION MONITOR

The LIFTX Lift Station Monitor saves time and expense by providing real-time status and alarms for a wide range of municipal applications include pump and lift stations.

Stand-Alone Cloud-Based Alarming, Monitoring, and Reporting of Lift Station Conditions via WebAdvantage.



KEY FEATURES

- Built-In Cellular Connection
- Remote Alarms, Alerts, & Status
- Customizable Info/Naming
- 5 or 10 Digital Inputs
- Customizable Notepad
- WebAdvantage Reporting
- Optional Totalizing Flow Inputs
- Optional (4-8) 4-20 mA Inputs
- Optional (up to 4) 4-20 mA Outputs

PRODUCT OVERVIEW

MegaTron LIFTX monitors provide web-based alarming and reporting of remote lift station conditions, such as: high/low level, pressure, temperature, motor current draw, generator switch over, loss of power, security, and more, with WebAdvantage cloud-based remote alarming and reporting.

Units come complete with the first 12 months of cellular service for easy start-up and web connectivity.

WebAdvantage provides web-based dashboard access of settings, conditions, e-mail and text alarming to multiple users and unique custom reporting.

Build a ModelLIFT - X A X X 1 A X

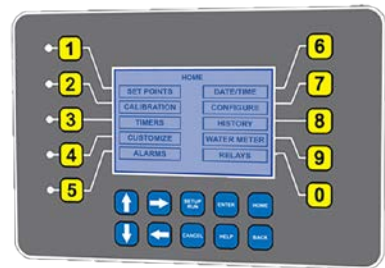
Step 1 system card functions

Power Options		95-230 VAC
X	95-230 VAC incoming no 24 VDC	
1	95-230 VAC incoming plus 24 VDC	
Relay Options		(2.5 amp each)
A	(5) dry contact relays	
B	(5) powered relays / conduit	
C	(5) powered relays with liquid tight	
D	(5) powered relays with USA pigtails	
mA In/Out Signals		8 signals max
X	None	
1	(4) mA inputs	
2	(4) mA output control	
3	(4) mA inputs and outputs	
4	(8) mA inputs	
Flow Meter (Pulse) Inputs		
X	None	
A	(4) totalizing flow meter inputs	
Digital Inputs		
1	(5) digital inputs with alarms	
2	(10) digital inputs with alarms	

Cellular Service Options		V=Verizon™, A=AT&T™
A	12 months (V)	
B	12 months with up to 3-month delay (V)	
C	12 months (A)	
D	24 month (V)	
E	Internal router (V) no data sim	

Additional Enclosure Options	
X	Standard enclosure
1	Mounted in MULTI-BOX (17" x 14" x 9")
2	Mounted in 16" x 14" x 8" enclosure

User-friendly, custom keypad/display for setup, programming and alerts.



Note: WebAdvantage has no annual fee but cell service and texting of alarms do have an annual fee.

Specifications

Electrical Input	95-230 VAC, 50/60 Hz
Relay Outputs	Dry contact relays pass through current is limited to 2.5 mA at 28 VDC.
Display	240 x 128 graphic LCD
Digital Inputs	Inputs have 10K Ω pullup to 3.3 VDC from open collector open drain output
Flow Totalizing Inputs	10K Ω pullup to 5 VDC max rate 2.5 KHz from open collector open drain output
mA Inputs	Optical isolation, 250 Ω / 5 VDC @ 20 mA. Loop voltage to not exceed 30 VDC.
mA Outputs	Non-isolated. 12 VDC max load = 400 Ω. Isolated ext 24 VDC max load = 800 Ω.
Ethernet	DHCP or static capable with 10/100 WiFi 802.11 (b/g/n)
Approvals	CE, UL61010-1/CSA C22.2 No. 61010-1-12 + A1:2022 (R2022)
Enclosure	NEMA 4X style polycarbonate
Ambient Temp	0° to 125°F (-17° to 52°C)
Shipping Weight	Approximately 10 lbs. (4.536 kg)
Relative Humidity	0 to 100%
Dimensions	11" (27.94cm) W x 11.75" (29.84 cm) H

RELATED PRODUCTS



Learn more about WebAdvantage



Learn more about water quality monitoring



Learn more about MicroLinx pumps



4700 Harold-Abitz Dr
Muskogee, OK 74403

918-686-6211 phone
918-686-6212 fax

www.advantagecontrols.com

2026-04-24