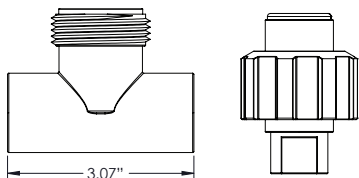


Conductivity Probes

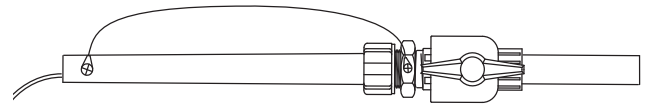
E-2 and E-4A Quick Release Style

PVC construction with carbon sensor tips designed for our quick release tee (T-3); 150 psi (10.4 bar), 140°F (60°C) max: E-2, E-4A, E-2SS, E-4ASS (SS = stainless steel sensor tips).



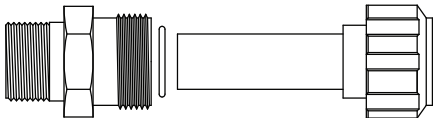
CS-4A Corporation Ctop Style

PVC construction with carbon sensor tips, 18" long supplied with a compression fitting and 1" FNPT ball valve; 75 psi (5.1 bar), 140°F (60°C) max.



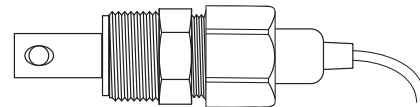
DI Insertion Style

PVC construction with carbon sensor tips includes a quick release collar with 1" MNPT connection; 150 psi (10.4 bar), 140°F (60°C) max: DI-2, and DI-4A.



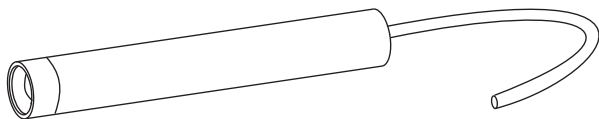
AL-4RTD and AL-4ASS Pure Water Probe

Stainless steel construction with a PVDF 1/2" MNPT compression fitting, 100 psi (6.9 bar), 212°F (100°C) max. AL-4RTD has RTD temperature compensation, AL-4ASS has thermistor temperature compensation.



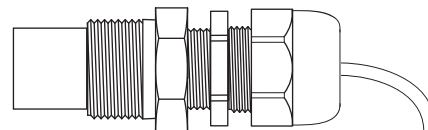
DC Dip Style

DC probes are 18" long, CPVC construction, 212°F (100°C) max: DC-2, DC-4A, DC-2SS, DC-4ASS (SS = stainless steel sensor tips).



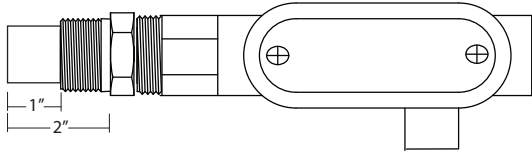
AH-4A Insertion Style

Stainless steel 1" MNPT bushing and CPVC construction; 250 psi (17.3 bar), 212°F (100°C) max: AH-2SS, AH-4ASS, AH-4BSS.



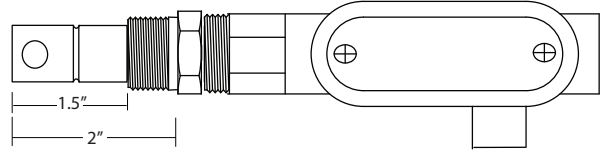
BE-2 Boiler Probes

Stainless steel 1" MNPT bushing and PEEK construction, 75 psi (5.17 bar) max: BE-2 no temperature compensation.



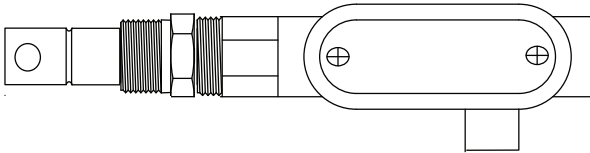
BE-32 and BE-4RTD Boiler Probes

Stainless steel and PEEK construction, 3/4" MNPT supplied with 1" bushing; 250 psi (17.2 bar), 400°F (204°C) max. BE-32 no temperature compensation, BE-4RTD uses RTD temperature compensation.



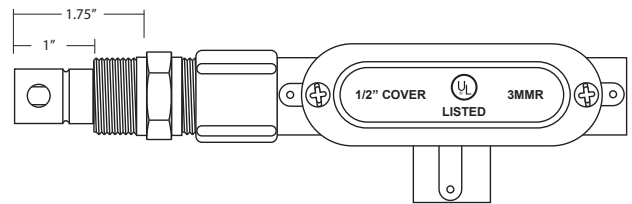
BE-H2-S and BE-H4RTD-S Boiler Probes

Stainless steel and PEEK construction, 3/4" MNPT; 600 psi (41.3 bar) max.



BE-32-S and BE-4RTD-S Boiler Probes

Slightly shorter model of the BE-32 and BE-4RTD. Stainless steel and PEEK construction, 3/4" MNPT, 250 psi (17.2 bar), 400°F (204°C) max. BE-32-S no temperature compensation, BE-4RTD-S uses RTD temperature compensation.



Notes:

- Thermistor style temperature compensation: A = 32°-140°F (0°-60°C), B = 32°-212°F (0°-100°C).
- RTD temperature compensation is only available on MegaTron and MegaTron XS controllers.
- Number of wires per probe: -1 or -2 = 2 wires; -4 = 4 wires.
- RTD probes require six conductors ran from controller to probe.

Wiring for Temperature Compensated Probes

- -A4 and -A4SS probes: Red and black for conductivity, and white and green for temperature.
- -4B and -4BSS probes: Red and black for conductivity, and white and green for temperature.
- AL-4RTD probes: Red and black for conductivity, and white, green and clear for temperature.
- BE-4RTD and BE-4RTD-S probes: Black & white for conductivity, and red & green for temperature. Six conductor wire must be run from probe to controller.
- BE-34B probes: Red and blue for conductivity, green and white for temperature.