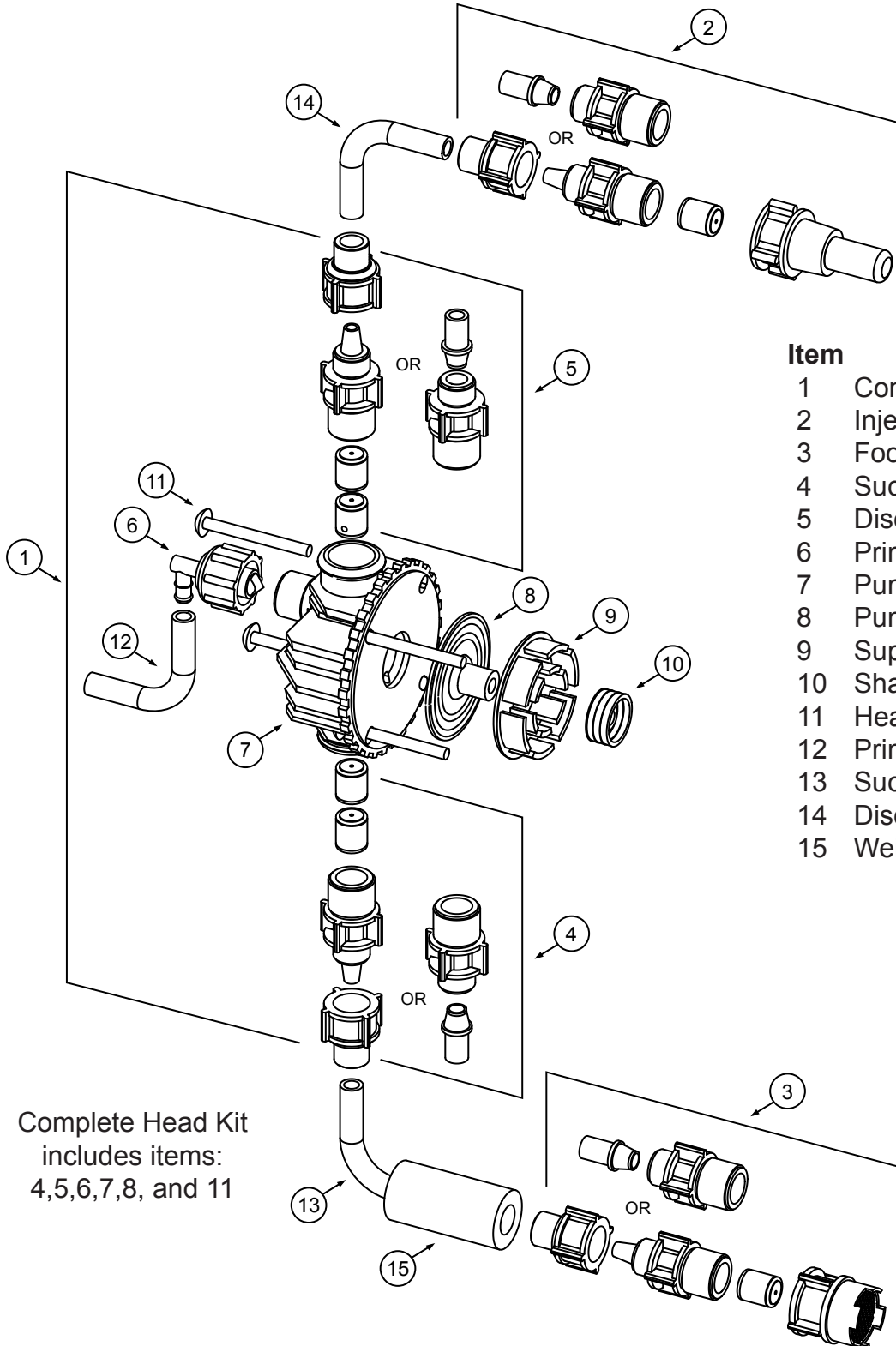


MicroTron Metering Pumps Liquid End Diagram



Item	Description
1	Complete Head Kit
2	Injection Valve
3	Foot Valve
4	Suction Valve
5	Discharge Valve
6	Priming Valve Assembly
7	Pump Head
8	Pump Diaphragm
9	Support Ring
10	Shaft Seal
11	Head Bolts
12	Priming Tube
13	Suction Tubing
14	Discharge Tubing
15	Weight

Complete Head Kit
includes items:
4,5,6,7,8, and 11

Replacement Parts

Getting the right materials of construction for your spare parts is easy. Using positions 7-10 of the pump model number, example: B130X1-**PFCV**. Find the assembly needed and add the codes of your pump's liquid end after the standard prefix part number for the assembly.

Note: For standard pumps using the short model number (example: B130) use the following liquid end codes.

- a. 110 psi models use **-PVC1**.
- b. 250 psi models use **-PVC2**.

Part Assemblies

Item	Description	Part Number
1.....	Complete Head Assembly 110 psi.....	CKR-1- _ _ _ _
.....	Complete Head Assembly 150 & 250 psi.....	CKR-2- _ _ _ _
2.....	Injection Valve Assembly.....	INJ- _ _ _ _
Optional.....	3-Function Injection Valve.....	3FV- _ _ _ _
3.....	Foot Valve Assembly.....	FTV- _ _ _ _
4.....	Suction Valve Assembly.....	SUC- _ _ _ _
5.....	Discharge Valve Assembly.....	DIS- _ _ _ _
6.....	Priming Valve Assembly.....	PRI- _ _ _ _

<u>Body</u>	<u>Seat</u>	<u>Ball</u>	<u>Connection</u>
P- Glass-filled Poly	V- Viton	C- Ceramic	1- 3/8" Tube
K- Kynar	F- Teflon	D- Single	2- 1/4" Tube
V- PVC	H- Hypalon	S- Stainless	3- 3/8" Tube
			K- 3/8" Tube
			P- 1/4" Pipe
			U- 3/8" UV
			V- 3/8" Clear Suction

Single Parts

7.....	Pump Head 110 psi.....	R00026 - _
.....	Pump Head 150 & 250 psi.....	R00039 - _
8.....	Diaphragm 110 psi.....	R00007
.....	Diaphragm 150 & 250 psi.....	R00006
9.....	Support Ring 110 psi.....	R00069
.....	Support Ring 150 & 250 psi.....	R00068
10.....	Shaft Seal.....	R00039
11.....	Head Bolts.....	R00045
12.....	Priming Tubing.....	R00255
13.....	Suction Tubing 3/8" Clear.....	R00255
.....	Suction Tubing 3/8" PE.....	R00122
.....	Suction Tubing 1/4" PE.....	R00097
14.....	Discharge Tubing 3/8" PE.....	R00122
.....	Discharge Tubing 1/4" PE.....	R00267
15.....	Weight, Suction Tubing.....	R00139

Get the Advantage



4700 Harold Abitz Dr
 Muskogee, OK 74403
 800-743-7431 phone
 888-686-6212 fax
www.advantagecontrols.com